

# Geo-Mattress® Plus

## Pressure Redistribution Foam Mattress



### Geo-Mattress Plus®

*Performance...Plus!*

Dual-layer, design perfectly blends patient comfort and clinical effectiveness.

- 6 years, non-prorated warranty
- Weight limit: 400 lbs.

Flammability Protection: Certified conformance to NFPA 101 (Life Safety Code); Cal. Tech Bulletin #117; 16 CFR 1632 and 1633; and BFD IX-11.

#### Primary Use:

- Prevention of Skin Breakdown

#### Patient Indications:

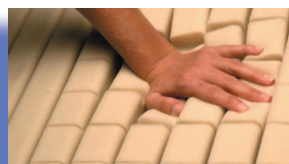
- General patient population
- Moderate – High Risk for skin breakdown (e.g., Braden 13-26)
- Decreased mobility
- Repositions frequently by self or caregiver

#### Key Advantages:

- Geo-Matt® anti-shearing surface
- Heel Slope™
- Hidden zipper for infection control

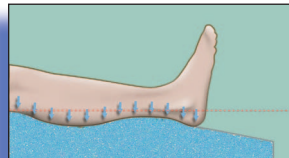
Item #	Description
PL8435-29	84"L x 35"W x 6"H
PL8035-29	80"L x 35"W x 6"H
PL7535-29	75"L x 35"W x 6"H

#### Packed with value-added features:



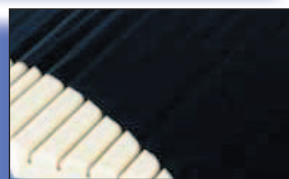
##### Segmented Geo-Matt® Design.

Clinically proven Geo-Matt® design creates a unique, anti-shearing top surface. 800 individually responsive cells in distinct head, torso, and foot zones enhance therapeutic support and comfort.



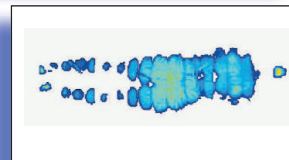
##### Exclusive Heel Slope®.

Subtle taper redistributes load to pressure-tolerant lower legs. Delivers heel pressures 27% lower than flat designs.



##### Fluid-proof, wipe-clean cover

with ultra-low moisture vapor transmission rate (MVTR). Bacteriostatically-treated top, durable tri-laminate bottom. Hidden zipper design for easier, more thorough cleaning and superior infection control.



##### Outstanding pressure redistribution

across the surface ensures low average of peak pressure at vulnerable sacrum and heels.

**SPAN**America  
Innovative Solutions.