



Pelvic Support

Pelvic Belts

Intended Use

The **Stealth Positioning™** line of pelvic belts, vests, chest straps and foot positioners are intended to help wheelchair users attain proper alignment of the torso, pelvis and feet. Comfort, stability and improved clinical posture are achieved through the use of breathable material and structured support.

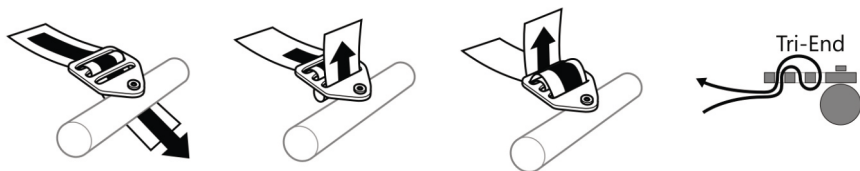
Pelvic positioning impacts all aspects of proper seating and safety. Pelvic positioning systems are placed in front of the client's pelvis to maintain a neutral position (to the degree possible for each client). A properly positioned pelvic support may:

- Help stabilize the pelvis, which directly affects seated body alignment;
- Aid in the prevention of sacral sitting, unsafe and non-functional postures, skin breakdowns, and increased pressure on bony prominences;
- Increase postural stability, decreasing the effort needed to sit;
- Facilitate posture, allowing an increase in upper extremity movement;
- Contribute to proper head positioning and neck alignment; and,
- Reduce negative postural tendencies that can lead to orthopedic deformities and other secondary medical complications.

Installation and Use

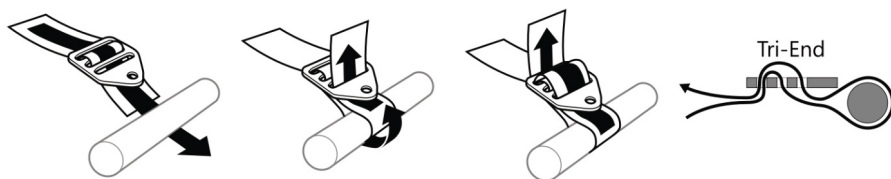
Pelvic belts may be installed in various manners depending on hardware, seating system or wheelchair type. Many choices of aftermarket attachment hardware are available. Be sure to read and understand all instructions supplied with any aftermarket hardware.

Fastened Tri-End



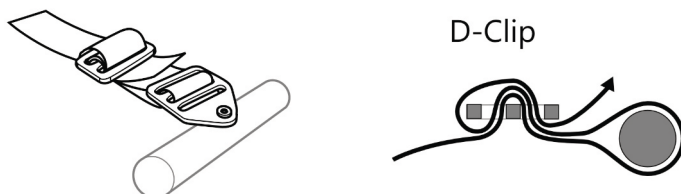
Tri-End is attached using a fastener and a hole in the seat rail.

Tri-End around Seat Rail



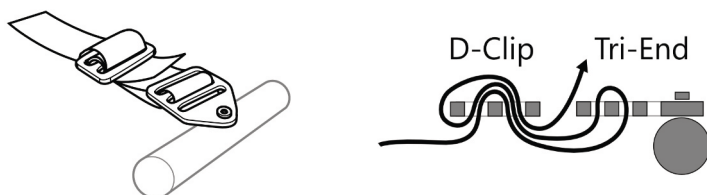
Thread the belt around the wheelchair tube in the correct location as shown above.

Sliding Double-D Clip around Seat Rail



Thread the belt around the wheelchair tube in the correct location as shown above.

Sliding Double-D Clip with Tri-End



Tri-end is attached using a fastener and a hole in the seat rail, then thread the belt through the Tri-end and D-Clip as shown above.

NOTICE: Ensure that the webbing is routed properly through the belt anchor and does not slip when pulled. Improper routing could lead to the strap becoming loose and slipping from the belt anchor.

Installation and Use

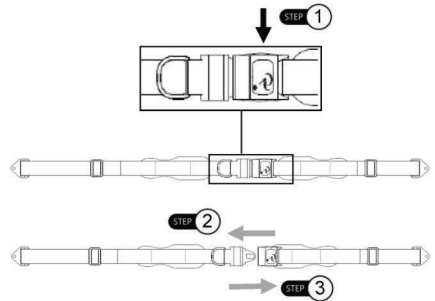
Push-Button Buckle

The Push-Button Buckle is used on Stealth Positioning™ pelvic belts.

Step 1: To release the buckle, depress the button with the Stealth Positioning™ logo on the buckle housing. This will disengage the locking mechanism.

Step 2: Pull gently on the male side of the buckle while holding the push button. It should release and separate from the housing. Make any adjustments to the belt as necessary.

Step 3: To reattach the buckle, slide the male side of the buckle back into the housing. A audible 'click' should occur, indicating that the belt is secure. If the button does not latch and hold, immediately refrain from using the product.



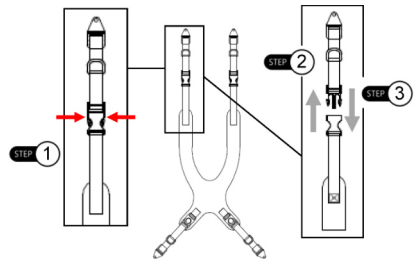
Side-Release Buckle

The Side-Release Buckle is used on the following Stealth Positioning™ products: Pelvic Belts, Backpack Straps, Y-Straps, Shoe Holders, Positioning Systems, Chest Straps, and Foot Positioners

Step 1: To remove the side-release buckle from the belt, pinch the buttons on the sides of the buckle. This will disengage the locking mechanism.

Step 2: Slide the male portion of the buckle from the housing. Make any adjustments necessary.

Step 3: To reattach the side-release buckle, slide the male portion of the buckle into the housing. A audible 'click' should occur, indicating that the buckle is secure. If the buckle does not latch and hold, immediately refrain from using the product.



Care and Cleaning

We recommend that all products be examined on a regular basis for wear and function. Check the stitching on the webbing for stress or damage. If loose, frayed or broken parts are discovered, discontinue use and contact your provider. Repairs should only be performed by a wheelchair service professional and with genuine Stealth Products parts, fasteners or items appropriate for the service required.

Surfaces may be cleaned with a damp cloth and a mild, non-abrasive cleaner. Ensure all cleaners are approved for finished steel, aluminum, plastic and upholstered surfaces. Vests and straps that are removable and DO NOT contain metal components may be machine washed warm (40°C), permanent press, gentle cycle.

DO NOT bleach. DO NOT tumble dry. Dry flat. DO NOT iron.

Important

Never use a chest harness without a positioning belt. Positioning belts and supports should only be used to help support the user's posture. The belts, posture supports and straps must be snug, but must not interfere with the user's breathing. Check to make sure the user cannot slide down in the seating system, as they may suffer chest compression and may suffocate due to pressure from the belts or harnesses. A seat with angle or built-in contours may help prevent the user from sliding in the seat. Due to the possibility of a user sliding while in-chair, unsupervised use of anterior thoracic support devices could pose a serious choking hazard. Continually ensure that the user is sitting upright and that the thoracic support device does not obstruct the user's breathing in any way.

These devices do not conform to ANSI/RESNA WC20 or SAE J2249 and are not designed or approved to provide restraint or protection in the event of a crash. Wheelchair users should transfer to a vehicle seat and use the vehicle seat belt system or a child safety seat that complies with federal safety standards. The wheelchair should then be stored and secured in the vehicle. Children weighing less than 48 lbs. must always transfer to an approved child safety seat.

Before you install or begin using any product from **Stealth Products' Stealth Positioning™** line, it is important that you read and understand the content of these installation and operating instructions. Product misuse due to failure to adhere to instructions and warnings in this document will void your warranty and may result in property damage, injury or death. Always keep the operating instructions in a safe place so they may be referenced as necessary. If this document contains information you do not understand or if there are concerns about safety or operation, contact your provider.

All information, pictures, illustrations and specifications are based on the product information available at the time of printing, and are representative examples. They are not intended to be exact descriptions of the various parts of the product. Instructions are written with the expressed intent of use with standard configurations. They also contain important safety and maintenance information. For assistance with advanced configurations or options, contact your provider or **Stealth Products** at (512) 715-9995 or toll free at (800) 965-9229.

Immediately discontinue use if any function is compromised, if parts are missing or loose or if any component shows signs of excessive wear. Consult with your provider for repair, adjustment or replacement. You can download additional copies of this manual by visiting <https://stlpro.site/stealth-docs/> and searching for "Stealth Positioning" in the document manager.

Warranty

Our products are designed, manufactured, and produced to the highest of standards. If any defect in material or workmanship is found, **Stealth Products** will repair or replace the product at our discretion. Any implied warranty, including the implied warranties of merchantability and fitness for a particular purpose, shall not extend beyond the duration of this warranty. **Stealth Products, LLC** does not warrant damage due to, but not limited to, misuse, abuse, or misapplication of products and modification of product without written approval from **Stealth Products, LLC**.


Any alteration or lack of serial number, where applicable, will automatically void this warranty. **Stealth Products, LLC** is liable for replacement parts only. **Stealth Products, LLC** is not liable for any incurred labor costs. No person is authorized to alter, extend, or waive the warranties of **Stealth Products, LLC**.

To learn more about our warranty and returns policy, please visit <https://stlpro.site/returns-n-warranty>.

About Us

Stealth Products is committed to 100% customer satisfaction. Your complete satisfaction is important to us. Please contact us with suggestions or feedback to help us improve the quality and usability of our products.

You may reach us at:

| | | | |
|--|---|--|--|
|  | Stealth Products, LLC | | Phone: (512) 715-9995 Toll Free: (800) 965-9229 |
| | 104 John Kelly Drive, Burnet, TX 78611 | | Fax: (512) 715-9954 Toll Free: (800) 806-1225 info@stealthproducts.com - www.stealthproducts.com |

| | | |
|--|--|--|
| EC REP | CH REP | UK Authorized Representative |
| MDSS GmbH Schiffgraben 41 30175 Hannover, Germany | SODIMED SA Chemin Praz Devant 12 1032 Romanel sur-Lausanne, Switzerland | MDSS-UK RP 6 Wilmslow Road, Rusholme Manchester M14 5TP, United Kingdom |

