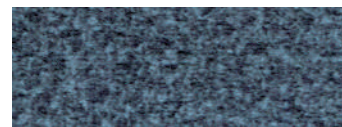




Shown in Brisa® Coffee Bean\*

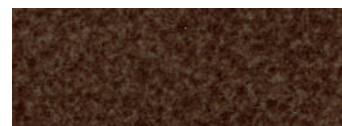
## Standard Fabrics:



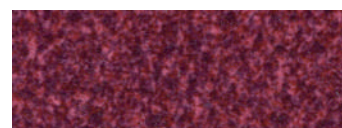
Calypso



Camel



Hazelnut



Shiraz



Sterling

## NEW Sinda Polyurethane!

No upcharge on crossover fabrics in the Sinda pattern on PR511 only.

\* An upcharge will apply for all other crossover fabrics.

## Cloud+ PR511



*Comfort Zone*  
by GOLDEN

Relax and recharge in comfort and style with the Cloud+ Power Lift Recliner. The Cloud+ features a stylish top load, open-arm design with a plush seamed back and our popular posture-encouraging bucket seat to conform to your body. Positioning options are endless with our 4-Zone Comfort Zone™ system offering adjustable footrest, backrest, headrest, and lumbar operated by our programmable AutoDrive™ hand control. For extra wellness and comfort, our new Nirvana™ Swedish Air Massage with HeatWave™ Full-Body Far Infrared Heat Therapy is optional. Right arm compartments feature the hand control dock, wireless phone charger, and power port that holds either the LED reading light or removable tray table that come standard. Left arm compartments feature a drink holder, USB charging port and more storage. Choose from an exciting array of optional accessories including an audio torch, tablet holder, flex light, color-changing snack bowl, fan, and diffuser. As a bonus, you can use the drink holder and table without losing the comfort of the armrests thanks to the split design!



**Cloud+**

## Standard Features:

- Patented MaxiComfort® Positioning
- Adjustable Headrest
- Adjustable Lumbar
- Programmable AutoDrive™ Hand Control
- Removable Tray Table
- Power Port & LED Light
- Wireless Phone Charger
- USB Charging Port
- Drink Holder
- SmartTek® Diagnostic System

## Optional Features:

- Nirvana™ Swedish Air Massage with HeatWave™ Technology



# MAXICOMFORT® Series PR511

Model Number	PR511-SMA	PR511-MED	PR511-LAR	PR511-MXW
Size	Small	Medium	Large	Medium /Wide
Class II Medical Device	YES	YES	YES	YES
Weight Capacity	400 LBS	400 LBS	400 LBS	600 LBS
Positioning	MaxiComfort	MaxiComfort	MaxiComfort	MaxiComfort
Comfort Zone(s)	4	4	4	4
Twilight Technology	NO	NO	NO	NO
ZG+	NO	NO	NO	NO
Chaise Seat	YES	YES	YES	YES
Pocketed Coil Seat	NO	NO	NO	NO
Back Type	Seam	Seam	Seam	Seam
Removable Back Type	Quick Release	Quick Release	Quick Release	Quick Release
Head Rest Cover	NO	NO	NO	NO
Arm Rest Covers	NO	NO	NO	NO
Overall Width	37.5"	37.5"	39"	43.5"
Overall Height	44"	46"	48"	45.5"
Seat Width	23"	23"	25"	29"
Floor to Top of Seat	20"	21"	22"	21"
Seat Depth	19"	21"	22"	22"
Seat to Top of Back	28"	30"	32"	30"
Seat to Top of Arm	7"	7"	8"	9"
Distance Required from Wall Reclined	21"	22"	25"	20"
Extension Reclined from Back of Seat to End of Foot Rest	43"	43"	44"	42.5"
Life Time Warranty, Chair Frame, Lift Frame, Recline Mechanism	YES	YES	YES	YES
Warranty on Electrical Parts	3 YR	3 YR	3 YR	3 YR
Pro Rated Years 4 Thru 7	YES	YES	YES	YES
Warranty on Mechanical Labor	3 YR	3 YR	3 YR	3 YR
Warranty on Electrical Labor	1 YR	1 YR	1 YR	1 YR
Hand Control Routing	Compartment	Compartment	Compartment	Compartment
Extra Pocket Option	NO	NO	NO	NO
Heat & Vibrating Massage Option	NO	NO	NO	NO
HeatWave Technology Option	NO	NO	NO	NO
Nirvana with HeatWave Option	YES	YES	YES	YES
Adjustable Headrest Option	Standard	Standard	Standard	Standard
Power Adjustable Lumbar Option	Standard	Standard	Standard	Standard
Foot Rest Extension Option	YES	YES	YES	YES
Straight Lift Option	Standard	Standard	Standard	Standard
USB Charging Port	YES	YES	YES	YES
Battery Backup	Lithium-ion	Lithium-ion	Lithium-ion	Lithium-ion
SmartTek Diagnostic System	Standard	Standard	Standard	Standard
Place of Origin	USA	USA	USA	USA

Cloud+



## Standard Features & Accessories



Power Adjustable Headrest & Lumbar



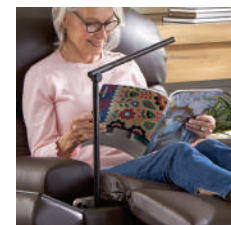
Drink Holder & Storage Compartment



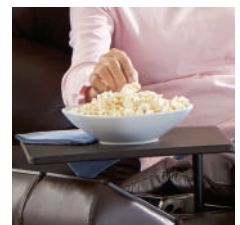
Wireless Phone Charger



USB Charging Port & Storage Compartment



LED Light



Removable Tray Table



*Comfort Zone™*  
by GOLDEN

**Comfort Zones 1 & 4** provide an ergonomic comfort experience with an emphasis on head and back support. Each Comfort Zone can be adjusted independently by using the exclusive AutoDrive hand control.



**WE PATENTED COMFORT™**

## Optional Accessories

- Cooling Fan
- Flex Light
- Audio Torch
- Illuminating Snack Bowl
- Essential Oil Diffuser
- Tablet Holder
- Wine Glass Holder

Visit our website to view optional accessories!



Phone: 800-624-6374

Fax: 800-628-5165

www.goldentech.com



Literature is current at time of printing. Golden Technologies reserves the right to make changes to the product or literature at any time.

Sizes may vary depending on fabric, filling material, upholstery and carpet thickness. All measurements taken on concrete floor using levels and metal rulers.



Complies with  
UL 73 and  
CSA C22.2 No. 68



www.facebook.com/goldentechnologies

LIT-SHT-PR511, Rev. A 021025